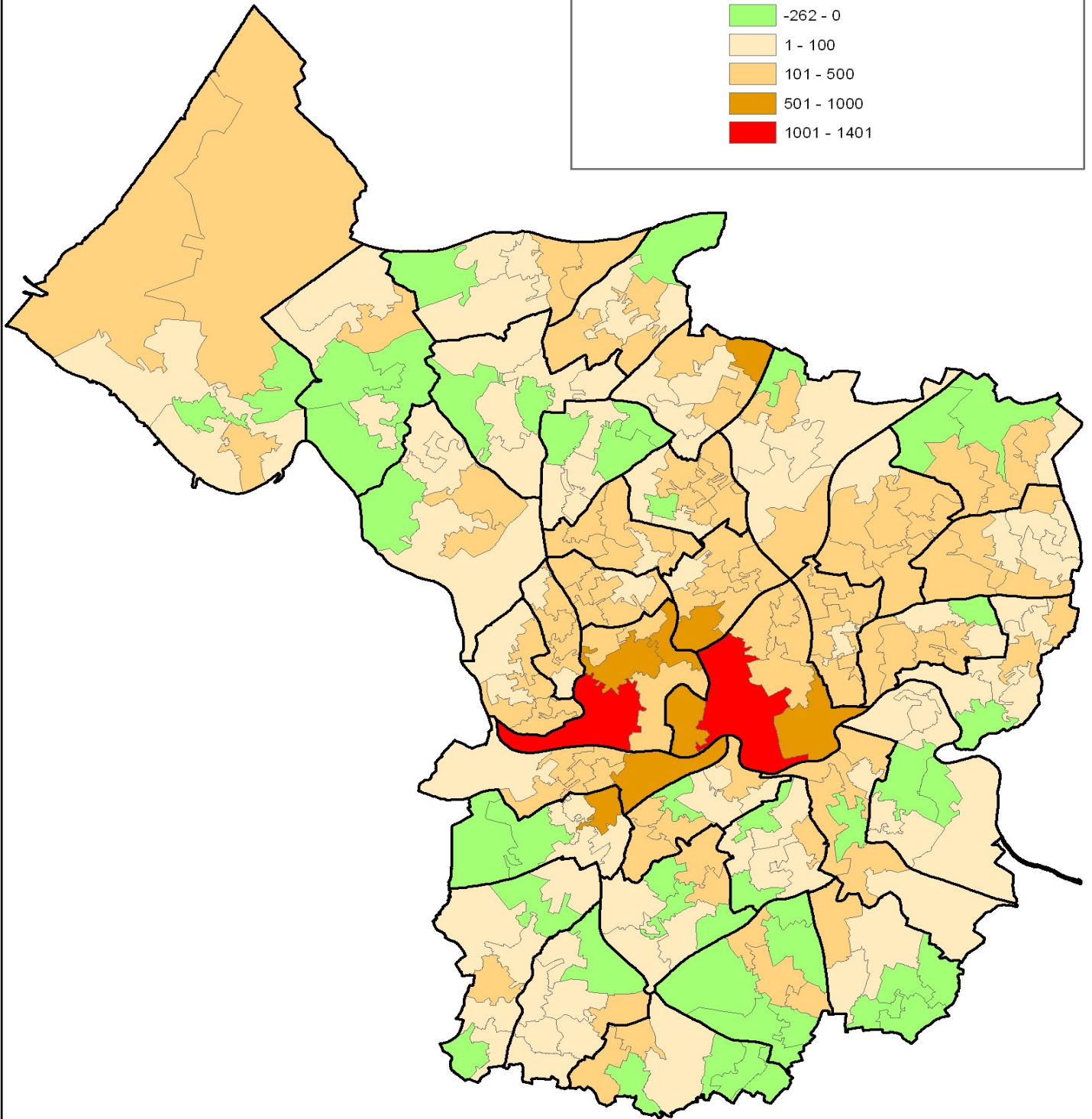
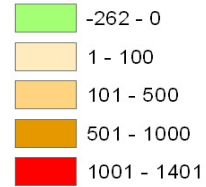


Population Change by Lower Layer Super Output Area (LSOA) 2001 to 2008

Source: ONS Experimental Statistics © Crown Copyright
Supplied by Research and Consultation, Bristol City Council

CHANGE 2001-2008



Population Estimates by Lower Layer Super Output Area - Bristol 2001-2008

Source: ONS Experimental Statistics © Crown Copyright

Supplied by Research and Consultation, Deputy Chief Executives Department, Bristol City Council

| LSOA | LSOA local name | Ward name | 2001 | 2002 | 2003 | 2004 | 2005 | 2006 | 2007 | 2008 | change 2001-2008 | % change 2001-2008 |
|-----------|----------------------|------------------|-------|-------|-------|-------|-------|-------|-------|-------|------------------|--------------------|
| E01014485 | Mina Road | Ashley | 1,895 | 1,887 | 1,878 | 1,942 | 1,971 | 1,989 | 1,975 | 2,002 | 107 | 5.6 |
| E01014486 | St Agnes | Ashley | 1,855 | 1,931 | 1,968 | 2,063 | 2,159 | 2,238 | 2,187 | 2,187 | 332 | 17.9 |
| E01014487 | Cromwell Road | Ashley | 1,902 | 1,879 | 1,880 | 1,920 | 1,963 | 1,986 | 1,993 | 1,998 | 96 | 5.0 |
| E01014488 | Upper Montpelier | Ashley | 1,818 | 1,807 | 1,856 | 1,879 | 1,923 | 1,943 | 1,974 | 1,986 | 168 | 9.2 |
| E01014489 | Lower Montpelier | Ashley | 2,060 | 2,061 | 2,061 | 2,101 | 2,211 | 2,229 | 2,313 | 2,320 | 260 | 12.6 |
| E01014490 | St Pauls | Ashley | 1,933 | 2,104 | 2,314 | 2,468 | 2,689 | 2,838 | 2,898 | 2,928 | 995 | 51.5 |
| E01014491 | Ashley Hill | Ashley | 1,959 | 2,001 | 1,949 | 1,999 | 2,071 | 2,058 | 2,064 | 2,082 | 123 | 6.3 |
| E01014492 | Shirehampton Centre | Avonmouth | 1,524 | 1,521 | 1,539 | 1,521 | 1,535 | 1,518 | 1,498 | 1,531 | 7 | 0.5 |
| E01014493 | Barrow Hill | Avonmouth | 1,522 | 1,502 | 1,507 | 1,500 | 1,509 | 1,477 | 1,485 | 1,501 | -21 | -1.4 |
| E01014494 | Shirehampton Portway | Avonmouth | 1,516 | 1,492 | 1,521 | 1,493 | 1,525 | 1,518 | 1,530 | 1,545 | 29 | 1.9 |
| E01014495 | Woodwell Road | Avonmouth | 1,463 | 1,444 | 1,474 | 1,489 | 1,492 | 1,528 | 1,571 | 1,603 | 140 | 9.6 |
| E01014496 | Avonmouth Docks | Avonmouth | 1,514 | 1,515 | 1,511 | 1,527 | 1,535 | 1,585 | 1,657 | 1,697 | 183 | 12.1 |
| E01014497 | Lawrence Weston West | Avonmouth | 1,491 | 1,471 | 1,488 | 1,480 | 1,470 | 1,484 | 1,492 | 1,488 | -3 | -0.2 |
| E01014498 | Kingsweston Avenue | Avonmouth | 1,497 | 1,454 | 1,476 | 1,527 | 1,550 | 1,515 | 1,590 | 1,622 | 125 | 8.4 |
| E01014499 | Avonmouth Village | Avonmouth | 1,623 | 1,648 | 1,646 | 1,625 | 1,660 | 1,623 | 1,676 | 1,685 | 62 | 3.8 |
| E01014500 | Parson Street | Bedminster | 1,484 | 1,464 | 1,469 | 1,488 | 1,461 | 1,513 | 1,579 | 1,570 | 86 | 5.8 |
| E01014501 | Ashton Vale | Bedminster | 1,585 | 1,560 | 1,565 | 1,540 | 1,516 | 1,506 | 1,541 | 1,539 | -46 | -2.9 |
| E01014502 | Bedminster Road | Bedminster | 1,628 | 1,580 | 1,534 | 1,600 | 1,642 | 1,677 | 1,689 | 1,668 | 40 | 2.5 |
| E01014503 | West Street | Bedminster | 1,497 | 1,483 | 1,550 | 1,575 | 1,662 | 1,711 | 1,875 | 2,073 | 576 | 38.5 |
| E01014504 | Luckwell Road | Bedminster | 1,478 | 1,500 | 1,475 | 1,496 | 1,526 | 1,516 | 1,580 | 1,574 | 96 | 6.5 |
| E01014505 | Chessel Street | Bedminster | 1,567 | 1,560 | 1,548 | 1,550 | 1,568 | 1,586 | 1,603 | 1,646 | 79 | 5.0 |
| E01014506 | Winterstoke Road | Bedminster | 1,512 | 1,506 | 1,494 | 1,490 | 1,502 | 1,496 | 1,513 | 1,510 | -2 | -0.1 |
| E01014507 | Seymour Road | Bishopston | 1,546 | 1,507 | 1,554 | 1,559 | 1,650 | 1,645 | 1,691 | 1,647 | 101 | 6.5 |
| E01014508 | Cricket Ground | Bishopston | 1,540 | 1,568 | 1,582 | 1,592 | 1,695 | 1,703 | 1,750 | 1,699 | 159 | 10.3 |
| E01014509 | Ashley Down | Bishopston | 1,443 | 1,396 | 1,494 | 1,464 | 1,554 | 1,655 | 1,751 | 1,844 | 401 | 27.8 |
| E01014510 | Memorial Stadium | Bishopston | 1,575 | 1,595 | 1,638 | 1,684 | 1,727 | 1,777 | 1,864 | 1,932 | 357 | 22.7 |
| E01014511 | Bishop Road | Bishopston | 1,409 | 1,367 | 1,370 | 1,345 | 1,378 | 1,369 | 1,384 | 1,400 | -9 | -0.6 |
| E01014512 | Somerville Road | Bishopston | 1,517 | 1,564 | 1,568 | 1,573 | 1,553 | 1,564 | 1,515 | 1,553 | 36 | 2.4 |
| E01014513 | St Bonaventures | Bishopston | 1,595 | 1,575 | 1,576 | 1,544 | 1,548 | 1,582 | 1,606 | 1,627 | 32 | 2.0 |
| E01014514 | Radnor Road | Bishopston | 1,580 | 1,569 | 1,631 | 1,634 | 1,734 | 1,786 | 1,814 | 1,852 | 272 | 17.2 |
| E01014515 | Highridge Common | Bishopsworth | 1,521 | 1,473 | 1,514 | 1,493 | 1,507 | 1,554 | 1,525 | 1,527 | 6 | 0.4 |
| E01014516 | Four Acres | Bishopsworth | 1,439 | 1,435 | 1,473 | 1,466 | 1,445 | 1,457 | 1,474 | 1,493 | 54 | 3.8 |
| E01014517 | Sherrin Way | Bishopsworth | 1,283 | 1,280 | 1,271 | 1,283 | 1,276 | 1,283 | 1,271 | 1,259 | -24 | -1.9 |
| E01014518 | Ilchester Crescent | Bishopsworth | 1,512 | 1,499 | 1,526 | 1,514 | 1,505 | 1,489 | 1,507 | 1,567 | 55 | 3.6 |
| E01014519 | Bedminster Down | Bishopsworth | 1,284 | 1,287 | 1,302 | 1,269 | 1,298 | 1,276 | 1,270 | 1,283 | -1 | -0.1 |
| E01014520 | Bridgwater Road | Bishopsworth | 1,516 | 1,507 | 1,537 | 1,575 | 1,567 | 1,562 | 1,571 | 1,566 | 50 | 3.3 |
| E01014521 | Kings Head Park | Bishopsworth | 1,298 | 1,307 | 1,305 | 1,283 | 1,267 | 1,296 | 1,316 | 1,358 | 60 | 4.6 |
| E01014522 | Highridge | Bishopsworth | 1,498 | 1,574 | 1,590 | 1,582 | 1,637 | 1,633 | 1,659 | 1,647 | 149 | 9.9 |
| E01014523 | Allison Road | Brislington East | 1,423 | 1,395 | 1,380 | 1,369 | 1,329 | 1,357 | 1,352 | 1,328 | -95 | -6.7 |
| E01014524 | Birchwood Road | Brislington East | 1,512 | 1,482 | 1,494 | 1,485 | 1,502 | 1,487 | 1,464 | 1,471 | -41 | -2.7 |
| E01014525 | Manworthy Road | Brislington East | 1,480 | 1,466 | 1,469 | 1,457 | 1,438 | 1,487 | 1,489 | 1,504 | 24 | 1.6 |
| E01014526 | Broomhill Road | Brislington East | 1,575 | 1,540 | 1,557 | 1,588 | 1,613 | 1,590 | 1,624 | 1,622 | 47 | 3.0 |
| E01014527 | School Road | Brislington East | 1,221 | 1,221 | 1,241 | 1,257 | 1,287 | 1,298 | 1,276 | 1,294 | 73 | 6.0 |
| E01014528 | Newbridge Road | Brislington East | 1,475 | 1,456 | 1,497 | 1,473 | 1,501 | 1,498 | 1,473 | 1,487 | 12 | 0.8 |
| E01014529 | St Annes Park | Brislington East | 1,460 | 1,455 | 1,421 | 1,411 | 1,405 | 1,444 | 1,451 | 1,486 | 26 | 1.8 |
| E01014530 | Wootton Road | Brislington East | 1,364 | 1,338 | 1,329 | 1,351 | 1,366 | 1,364 | 1,387 | 1,419 | 55 | 4.0 |
| E01014531 | Sandy Park Road | Brislington West | 1,635 | 1,656 | 1,628 | 1,609 | 1,639 | 1,664 | 1,704 | 1,786 | 151 | 9.2 |
| E01014532 | Sandholme Road | Brislington West | 1,467 | 1,440 | 1,468 | 1,491 | 1,449 | 1,461 | 1,493 | 1,527 | 60 | 4.1 |
| E01014533 | Bath Road | Brislington West | 1,470 | 1,478 | 1,473 | 1,477 | 1,495 | 1,495 | 1,447 | 1,468 | -2 | -0.1 |
| E01014534 | Kensington Park | Brislington West | 1,506 | 1,508 | 1,508 | 1,554 | 1,579 | 1,581 | 1,645 | 1,652 | 146 | 9.7 |
| E01014535 | Callington Road | Brislington West | 1,668 | 1,672 | 1,727 | 1,761 | 1,799 | 1,801 | 1,829 | 1,833 | 165 | 9.9 |
| E01014536 | Hicks Gate | Brislington West | 1,441 | 1,423 | 1,457 | 1,460 | 1,472 | 1,489 | 1,483 | 1,452 | 11 | 0.8 |

| LSOA | LSOA local name | Ward name | 2001 | 2002 | 2003 | 2004 | 2005 | 2006 | 2007 | 2008 | change 2001-2008 | % change 2001-2008 |
|-----------|-------------------------------|------------------|-------|-------|-------|-------|-------|-------|-------|-------|------------------|--------------------|
| E01014537 | Eldonwall | Brislington West | 1,435 | 1,447 | 1,434 | 1,466 | 1,582 | 1,620 | 1,649 | 1,673 | 238 | 16.6 |
| E01014538 | Woodland Road | Cabot | 1,714 | 1,666 | 1,700 | 1,737 | 1,772 | 1,981 | 2,031 | 2,027 | 313 | 18.3 |
| E01014539 | Kingsdown Parade | Cabot | 1,651 | 1,637 | 1,649 | 1,645 | 1,675 | 1,736 | 1,814 | 1,801 | 150 | 9.1 |
| E01014540 | City Centre and Queens Square | Cabot | 1,531 | 1,524 | 1,634 | 1,737 | 1,829 | 1,864 | 1,825 | 1,732 | 201 | 13.1 |
| E01014541 | St James Barton | Cabot | 1,578 | 1,638 | 1,645 | 1,640 | 1,829 | 2,037 | 2,143 | 2,225 | 647 | 41.0 |
| E01014542 | University | Cabot | 1,597 | 1,794 | 2,041 | 2,336 | 2,439 | 2,405 | 2,351 | 2,246 | 649 | 40.6 |
| E01014543 | City Centre and Harbourside | Cabot | 1,779 | 2,143 | 2,438 | 2,730 | 2,950 | 3,001 | 3,161 | 3,180 | 1,401 | 78.8 |
| E01014544 | Clifton Down | Clifton | 1,481 | 1,447 | 1,501 | 1,534 | 1,458 | 1,414 | 1,416 | 1,511 | 30 | 2.0 |
| E01014545 | Clifton College | Clifton | 1,444 | 1,502 | 1,539 | 1,552 | 1,581 | 1,593 | 1,594 | 1,609 | 165 | 11.4 |
| E01014546 | Clifton Central | Clifton | 1,567 | 1,614 | 1,599 | 1,617 | 1,772 | 1,731 | 1,779 | 1,735 | 168 | 10.7 |
| E01014547 | Clifton Village | Clifton | 1,562 | 1,513 | 1,527 | 1,538 | 1,610 | 1,656 | 1,665 | 1,644 | 82 | 5.2 |
| E01014548 | Hotwells | Clifton | 1,515 | 1,525 | 1,586 | 1,688 | 1,734 | 1,714 | 1,705 | 1,785 | 270 | 17.8 |
| E01014549 | Cliftonwood | Clifton | 1,120 | 1,107 | 1,138 | 1,205 | 1,224 | 1,131 | 1,170 | 1,287 | 167 | 14.9 |
| E01014550 | Hotwells East | Clifton | 1,847 | 1,941 | 2,022 | 2,019 | 2,098 | 2,046 | 2,067 | 2,122 | 275 | 14.9 |
| E01014551 | Oakfield Grove | Clifton East | 1,571 | 1,600 | 1,613 | 1,633 | 1,677 | 1,700 | 1,747 | 1,807 | 236 | 15.0 |
| E01014552 | Alma Road | Clifton East | 1,668 | 1,656 | 1,653 | 1,738 | 1,869 | 1,839 | 1,773 | 1,778 | 110 | 6.6 |
| E01014553 | Whatley Road | Clifton East | 1,598 | 1,576 | 1,625 | 1,667 | 1,766 | 1,785 | 1,803 | 1,807 | 209 | 13.1 |
| E01014554 | Queens Road | Clifton East | 1,535 | 1,577 | 1,580 | 1,600 | 1,656 | 1,656 | 1,655 | 1,654 | 119 | 7.8 |
| E01014555 | Lower Clifton Hill | Clifton East | 1,569 | 1,620 | 1,677 | 1,678 | 1,721 | 1,631 | 1,564 | 1,632 | 63 | 4.0 |
| E01014556 | Worral Road | Clifton East | 1,673 | 1,696 | 1,702 | 1,734 | 1,765 | 1,733 | 1,688 | 1,762 | 89 | 5.3 |
| E01014557 | Cotham Park | Cotham | 1,504 | 1,490 | 1,465 | 1,481 | 1,568 | 1,560 | 1,663 | 1,711 | 207 | 13.8 |
| E01014558 | Cotham Hill | Cotham | 1,578 | 1,521 | 1,536 | 1,593 | 1,711 | 1,624 | 1,665 | 1,706 | 128 | 8.1 |
| E01014559 | Lower Redland Road | Cotham | 1,654 | 1,666 | 1,696 | 1,752 | 1,759 | 1,762 | 1,834 | 1,925 | 271 | 16.4 |
| E01014560 | Clyde Road | Cotham | 1,499 | 1,543 | 1,569 | 1,637 | 1,756 | 1,718 | 1,745 | 1,725 | 226 | 15.1 |
| E01014561 | Redland Grove | Cotham | 1,657 | 1,607 | 1,634 | 1,633 | 1,654 | 1,680 | 1,754 | 1,717 | 60 | 3.6 |
| E01014562 | Kensington Road | Cotham | 1,554 | 1,555 | 1,539 | 1,625 | 1,718 | 1,747 | 1,906 | 1,824 | 270 | 17.4 |
| E01014563 | Cotham Brow | Cotham | 1,492 | 1,486 | 1,494 | 1,516 | 1,618 | 1,664 | 1,792 | 1,743 | 251 | 16.8 |
| E01014564 | Chelsea Park | Easton | 1,733 | 1,761 | 1,724 | 1,728 | 1,809 | 1,828 | 1,864 | 1,876 | 143 | 8.3 |
| E01014565 | Gilbert Road | Easton | 1,670 | 1,668 | 1,576 | 1,585 | 1,680 | 1,757 | 1,738 | 1,684 | 14 | 0.8 |
| E01014566 | Church Road | Easton | 1,698 | 1,667 | 1,667 | 1,742 | 1,740 | 1,829 | 1,819 | 1,888 | 190 | 11.2 |
| E01014567 | Netham | Easton | 1,799 | 1,728 | 1,727 | 1,773 | 1,852 | 1,871 | 1,966 | 2,091 | 292 | 16.2 |
| E01014568 | St Marks Road | Easton | 1,843 | 1,877 | 1,887 | 1,892 | 1,974 | 2,062 | 2,012 | 2,101 | 258 | 14.0 |
| E01014569 | Robertson Road | Easton | 1,778 | 1,822 | 1,815 | 1,814 | 1,858 | 1,888 | 1,923 | 1,956 | 178 | 10.0 |
| E01014570 | Whitehall | Easton | 1,693 | 1,642 | 1,681 | 1,686 | 1,716 | 1,766 | 1,785 | 1,856 | 163 | 9.6 |
| E01014571 | Whitefield Fishponds | Eastville | 1,478 | 1,453 | 1,498 | 1,547 | 1,607 | 1,630 | 1,618 | 1,646 | 168 | 11.4 |
| E01014572 | Fishponds Road | Eastville | 1,584 | 1,623 | 1,653 | 1,688 | 1,795 | 1,862 | 1,879 | 1,916 | 332 | 21.0 |
| E01014573 | Upper Eastville | Eastville | 1,588 | 1,575 | 1,592 | 1,598 | 1,630 | 1,686 | 1,708 | 1,750 | 162 | 10.2 |
| E01014574 | Greenbank | Eastville | 1,589 | 1,625 | 1,634 | 1,649 | 1,734 | 1,857 | 1,971 | 1,955 | 366 | 23.0 |
| E01014575 | Eastville Park | Eastville | 1,518 | 1,545 | 1,504 | 1,478 | 1,546 | 1,597 | 1,624 | 1,658 | 140 | 9.2 |
| E01014576 | Rose Green | Eastville | 1,726 | 1,789 | 1,786 | 1,820 | 1,853 | 1,878 | 1,913 | 1,915 | 189 | 11.0 |
| E01014577 | Stapleton | Eastville | 1,507 | 1,512 | 1,517 | 1,514 | 1,537 | 1,549 | 1,563 | 1,590 | 83 | 5.5 |
| E01014578 | Wedmore Vale | Filwood | 1,551 | 1,530 | 1,573 | 1,597 | 1,638 | 1,646 | 1,657 | 1,681 | 130 | 8.4 |
| E01014579 | Novers | Filwood | 1,247 | 1,280 | 1,226 | 1,212 | 1,217 | 1,285 | 1,309 | 1,326 | 79 | 6.3 |
| E01014580 | Inns Court | Filwood | 1,500 | 1,522 | 1,555 | 1,555 | 1,574 | 1,569 | 1,591 | 1,564 | 64 | 4.3 |
| E01014581 | Filwood Broadway | Filwood | 1,484 | 1,475 | 1,498 | 1,484 | 1,498 | 1,502 | 1,481 | 1,496 | 12 | 0.8 |
| E01014582 | Leinster Avenue | Filwood | 1,360 | 1,330 | 1,315 | 1,337 | 1,334 | 1,304 | 1,308 | 1,324 | -36 | -2.6 |
| E01014583 | Throgmorton Road | Filwood | 1,414 | 1,384 | 1,419 | 1,427 | 1,396 | 1,415 | 1,415 | 1,404 | -10 | -0.7 |
| E01014584 | Glyn Vale | Filwood | 1,500 | 1,486 | 1,458 | 1,445 | 1,475 | 1,442 | 1,469 | 1,479 | -21 | -1.4 |
| E01014585 | Ilminster Avenue West | Filwood | 1,581 | 1,583 | 1,580 | 1,576 | 1,599 | 1,624 | 1,671 | 1,732 | 151 | 9.6 |
| E01014586 | Oldbury Court | Frome Vale | 1,508 | 1,492 | 1,464 | 1,451 | 1,503 | 1,482 | 1,488 | 1,466 | -42 | -2.8 |
| E01014587 | Broomhill | Frome Vale | 1,550 | 1,591 | 1,542 | 1,539 | 1,548 | 1,624 | 1,608 | 1,543 | -7 | -0.5 |
| E01014588 | Blackberry Hill | Frome Vale | 1,541 | 1,560 | 1,599 | 1,590 | 1,656 | 1,706 | 1,707 | 1,693 | 152 | 9.9 |
| E01014589 | Gill Avenue | Frome Vale | 1,445 | 1,457 | 1,460 | 1,443 | 1,495 | 1,551 | 1,566 | 1,555 | 110 | 7.6 |
| E01014590 | Fishponds | Frome Vale | 1,548 | 1,544 | 1,536 | 1,526 | 1,625 | 1,715 | 1,798 | 1,779 | 231 | 14.9 |

| LSOA | LSOA local name | Ward name | 2001 | 2002 | 2003 | 2004 | 2005 | 2006 | 2007 | 2008 | change 2001 2008 | % change 2001-2008 |
|-----------|------------------------|-------------|-------|-------|-------|-------|-------|-------|-------|-------|---------------------|-----------------------|
| E01014591 | Downend West | Frome Vale | 1,674 | 1,675 | 1,655 | 1,674 | 1,707 | 1,731 | 1,753 | 1,773 | 99 | 5.9 |
| E01014592 | Staple Hill Road North | Frome Vale | 1,509 | 1,539 | 1,566 | 1,557 | 1,557 | 1,650 | 1,631 | 1,691 | 182 | 12.1 |
| E01014593 | Fulford Road North | Hartcliffe | 1,323 | 1,314 | 1,277 | 1,299 | 1,389 | 1,410 | 1,418 | 1,468 | 145 | 11.0 |
| E01014594 | Whitchurch Lane | Hartcliffe | 1,546 | 1,579 | 1,594 | 1,571 | 1,563 | 1,587 | 1,559 | 1,573 | 27 | 1.7 |
| E01014595 | Withywood | Hartcliffe | 1,355 | 1,360 | 1,357 | 1,348 | 1,328 | 1,345 | 1,399 | 1,372 | 17 | 1.3 |
| E01014596 | Fair Furlong | Hartcliffe | 1,557 | 1,562 | 1,598 | 1,591 | 1,586 | 1,567 | 1,558 | 1,569 | 12 | 0.8 |
| E01014597 | Bishopport Avenue West | Hartcliffe | 1,437 | 1,420 | 1,416 | 1,398 | 1,413 | 1,422 | 1,475 | 1,454 | 17 | 1.2 |
| E01014598 | Imperial Park | Hartcliffe | 1,507 | 1,512 | 1,500 | 1,457 | 1,459 | 1,454 | 1,477 | 1,479 | -28 | -1.9 |
| E01014599 | Headley Park | Hartcliffe | 1,224 | 1,236 | 1,229 | 1,213 | 1,239 | 1,232 | 1,265 | 1,280 | 56 | 4.6 |
| E01014600 | Whitchurch Road | Hartcliffe | 1,283 | 1,302 | 1,299 | 1,302 | 1,326 | 1,350 | 1,372 | 1,360 | 77 | 6.0 |
| E01014601 | Brentry West | Henbury | 1,468 | 1,487 | 1,476 | 1,502 | 1,539 | 1,593 | 1,631 | 1,677 | 209 | 14.2 |
| E01014602 | Henbury | Henbury | 1,600 | 1,585 | 1,607 | 1,657 | 1,696 | 1,681 | 1,682 | 1,696 | 96 | 6.0 |
| E01014603 | Brentry East | Henbury | 1,705 | 1,703 | 1,849 | 1,961 | 2,015 | 1,963 | 2,003 | 2,049 | 344 | 20.2 |
| E01014604 | Blaise Hamlet | Henbury | 1,466 | 1,443 | 1,420 | 1,411 | 1,416 | 1,402 | 1,419 | 1,424 | -42 | -2.9 |
| E01014605 | Crow Lane | Henbury | 1,484 | 1,459 | 1,462 | 1,426 | 1,460 | 1,505 | 1,517 | 1,537 | 53 | 3.6 |
| E01014606 | Blaise Castle | Henbury | 1,785 | 1,801 | 1,760 | 1,728 | 1,759 | 1,738 | 1,798 | 1,799 | 14 | 0.8 |
| E01014607 | Hengrove Park | Hengrove | 1,486 | 1,455 | 1,413 | 1,411 | 1,409 | 1,417 | 1,390 | 1,404 | -82 | -5.5 |
| E01014608 | Hengrove West | Hengrove | 1,454 | 1,481 | 1,589 | 1,576 | 1,582 | 1,582 | 1,600 | 1,636 | 182 | 12.5 |
| E01014609 | Two Acres | Hengrove | 1,521 | 1,535 | 1,562 | 1,609 | 1,633 | 1,619 | 1,633 | 1,724 | 203 | 13.3 |
| E01014610 | Wharnecliffe Gardens | Hengrove | 1,259 | 1,286 | 1,302 | 1,333 | 1,318 | 1,347 | 1,403 | 1,384 | 125 | 9.9 |
| E01014611 | Fortfield West | Hengrove | 1,410 | 1,403 | 1,401 | 1,406 | 1,373 | 1,373 | 1,381 | 1,367 | -43 | -3.0 |
| E01014612 | Fortfield East | Hengrove | 1,477 | 1,484 | 1,485 | 1,504 | 1,510 | 1,477 | 1,444 | 1,452 | -25 | -1.7 |
| E01014613 | Hengrove Lane | Hengrove | 1,456 | 1,441 | 1,472 | 1,431 | 1,434 | 1,429 | 1,485 | 1,451 | -5 | -0.3 |
| E01014614 | Hengrove East | Hengrove | 1,272 | 1,256 | 1,236 | 1,229 | 1,231 | 1,239 | 1,242 | 1,214 | -58 | -4.6 |
| E01014615 | Golden Hill | Henleaze | 1,527 | 1,526 | 1,496 | 1,510 | 1,512 | 1,514 | 1,538 | 1,518 | -9 | -0.6 |
| E01014616 | Henleaze West | Henleaze | 1,486 | 1,465 | 1,407 | 1,439 | 1,437 | 1,398 | 1,456 | 1,468 | -18 | -1.2 |
| E01014617 | West Broadway | Henleaze | 1,471 | 1,436 | 1,407 | 1,425 | 1,413 | 1,404 | 1,385 | 1,385 | -86 | -5.8 |
| E01014618 | Henleaze North | Henleaze | 1,450 | 1,462 | 1,490 | 1,476 | 1,511 | 1,507 | 1,511 | 1,526 | 76 | 5.2 |
| E01014619 | North View | Henleaze | 1,549 | 1,505 | 1,564 | 1,619 | 1,640 | 1,591 | 1,606 | 1,588 | 39 | 2.5 |
| E01014620 | Henleaze South | Henleaze | 1,482 | 1,503 | 1,482 | 1,480 | 1,465 | 1,491 | 1,518 | 1,491 | 9 | 0.6 |
| E01014621 | Westbury Park North | Henleaze | 1,554 | 1,551 | 1,563 | 1,561 | 1,582 | 1,590 | 1,587 | 1,560 | 6 | 0.4 |
| E01014622 | Hillfields West | Hillfields | 1,509 | 1,523 | 1,495 | 1,465 | 1,528 | 1,532 | 1,575 | 1,598 | 89 | 5.9 |
| E01014623 | Mayfield Park | Hillfields | 1,537 | 1,543 | 1,540 | 1,527 | 1,555 | 1,630 | 1,633 | 1,667 | 130 | 8.5 |
| E01014624 | Lodge Hill | Hillfields | 1,670 | 1,681 | 1,687 | 1,694 | 1,703 | 1,703 | 1,674 | 1,699 | 29 | 1.7 |
| E01014625 | Hillfields East | Hillfields | 1,628 | 1,650 | 1,633 | 1,656 | 1,671 | 1,673 | 1,665 | 1,683 | 55 | 3.4 |
| E01014626 | Speedwell | Hillfields | 1,510 | 1,493 | 1,529 | 1,565 | 1,601 | 1,606 | 1,616 | 1,635 | 125 | 8.3 |
| E01014627 | Chester Park | Hillfields | 1,546 | 1,538 | 1,536 | 1,595 | 1,656 | 1,693 | 1,874 | 1,952 | 406 | 26.3 |
| E01014628 | Staple Hill Road South | Hillfields | 1,466 | 1,497 | 1,505 | 1,498 | 1,540 | 1,552 | 1,552 | 1,585 | 119 | 8.1 |
| E01014629 | Hillfields North | Hillfields | 1,487 | 1,539 | 1,491 | 1,506 | 1,520 | 1,542 | 1,532 | 1,557 | 70 | 4.7 |
| E01014630 | Sheridan Road | Horfield | 1,357 | 1,312 | 1,182 | 1,211 | 1,402 | 1,711 | 1,906 | 1,974 | 617 | 45.5 |
| E01014631 | Monks Park | Horfield | 1,263 | 1,305 | 1,332 | 1,406 | 1,404 | 1,403 | 1,393 | 1,376 | 113 | 8.9 |
| E01014632 | Filton Road | Horfield | 1,433 | 1,500 | 1,523 | 1,489 | 1,489 | 1,423 | 1,415 | 1,457 | 24 | 1.7 |
| E01014633 | Manor Farm | Horfield | 1,514 | 1,511 | 1,514 | 1,503 | 1,496 | 1,563 | 1,595 | 1,587 | 73 | 4.8 |
| E01014634 | Keys Avenue | Horfield | 1,538 | 1,536 | 1,574 | 1,586 | 1,662 | 1,711 | 1,754 | 1,716 | 178 | 11.6 |
| E01014635 | Wessex Avenue | Horfield | 1,485 | 1,495 | 1,510 | 1,537 | 1,694 | 1,785 | 1,859 | 1,873 | 388 | 26.1 |
| E01014636 | Horfield Common | Horfield | 1,380 | 1,380 | 1,403 | 1,372 | 1,427 | 1,463 | 1,490 | 1,479 | 99 | 7.2 |
| E01014637 | Wellington Hill | Horfield | 1,426 | 1,409 | 1,424 | 1,409 | 1,441 | 1,435 | 1,443 | 1,464 | 38 | 2.7 |
| E01014638 | Lawrence Weston Parade | Kingsweston | 1,610 | 1,643 | 1,604 | 1,587 | 1,559 | 1,591 | 1,610 | 1,689 | 79 | 4.9 |
| E01014639 | Lawrence Weston South | Kingsweston | 1,521 | 1,584 | 1,576 | 1,587 | 1,600 | 1,588 | 1,626 | 1,640 | 119 | 7.8 |
| E01014640 | Lawrence Weston East | Kingsweston | 1,577 | 1,592 | 1,574 | 1,579 | 1,599 | 1,601 | 1,584 | 1,580 | 3 | 0.2 |
| E01014641 | Coombe Dingle East | Kingsweston | 1,493 | 1,488 | 1,485 | 1,473 | 1,479 | 1,474 | 1,473 | 1,480 | -13 | -0.9 |
| E01014642 | Coombe Dingle West | Kingsweston | 1,487 | 1,484 | 1,471 | 1,459 | 1,429 | 1,452 | 1,474 | 1,465 | -22 | -1.5 |
| E01014643 | Sea Mills South | Kingsweston | 1,547 | 1,557 | 1,568 | 1,527 | 1,538 | 1,522 | 1,495 | 1,498 | -49 | -3.2 |
| E01014644 | Sea Mills North | Kingsweston | 1,671 | 1,655 | 1,638 | 1,641 | 1,658 | 1,658 | 1,671 | 1,690 | 19 | 1.1 |

| LSOA | LSOA local name | Ward name | 2001 | 2002 | 2003 | 2004 | 2005 | 2006 | 2007 | 2008 | change 2001 2008 | % change 2001-2008 |
|-----------|--------------------------|----------------|-------|-------|-------|-------|-------|-------|-------|-------|---------------------|-----------------------|
| E01014645 | Red Lion Hill | Knowle | 1,563 | 1,532 | 1,579 | 1,568 | 1,568 | 1,596 | 1,579 | 1,581 | 18 | 1.2 |
| E01014646 | Knowle Park | Knowle | 1,569 | 1,596 | 1,609 | 1,590 | 1,612 | 1,619 | 1,631 | 1,650 | 81 | 5.2 |
| E01014647 | Ilminster Avenue East | Knowle | 1,723 | 1,690 | 1,681 | 1,681 | 1,701 | 1,678 | 1,705 | 1,718 | -5 | -0.3 |
| E01014648 | Upper Knowle | Knowle | 1,503 | 1,505 | 1,496 | 1,493 | 1,523 | 1,544 | 1,563 | 1,599 | 96 | 6.4 |
| E01014649 | Redcatch | Knowle | 1,533 | 1,500 | 1,504 | 1,517 | 1,537 | 1,535 | 1,534 | 1,513 | -20 | -1.3 |
| E01014650 | Broadwalk | Knowle | 1,599 | 1,603 | 1,602 | 1,606 | 1,642 | 1,637 | 1,667 | 1,646 | 47 | 2.9 |
| E01014651 | Talbot Hill | Knowle | 1,498 | 1,536 | 1,556 | 1,573 | 1,607 | 1,596 | 1,629 | 1,619 | 121 | 8.1 |
| E01014652 | Redcliffe | Lawrence Hill | 1,856 | 1,937 | 2,138 | 2,268 | 2,485 | 2,603 | 2,649 | 2,735 | 879 | 47.4 |
| E01014653 | Easton Road | Lawrence Hill | 1,840 | 1,877 | 1,843 | 1,918 | 2,040 | 2,124 | 2,180 | 2,287 | 447 | 24.3 |
| E01014654 | St Judes | Lawrence Hill | 1,872 | 1,960 | 2,056 | 2,123 | 2,244 | 2,315 | 2,321 | 2,364 | 492 | 26.3 |
| E01014655 | Stapleton Road | Lawrence Hill | 1,969 | 1,976 | 1,983 | 1,995 | 2,037 | 2,122 | 2,084 | 2,163 | 194 | 9.9 |
| E01014656 | Old Market and the Dings | Lawrence Hill | 1,854 | 1,899 | 1,988 | 2,230 | 2,357 | 2,613 | 2,768 | 2,963 | 1,109 | 59.8 |
| E01014657 | Barton Hill Road | Lawrence Hill | 1,941 | 1,954 | 2,027 | 2,130 | 2,186 | 2,274 | 2,279 | 2,350 | 409 | 21.1 |
| E01014658 | St Philips | Lawrence Hill | 1,848 | 1,856 | 1,836 | 1,898 | 1,995 | 2,123 | 2,275 | 2,363 | 515 | 27.9 |
| E01014659 | Filton Avenue North | Lockleaze | 1,713 | 1,651 | 1,652 | 1,524 | 1,278 | 1,030 | 1,159 | 1,451 | -262 | -15.3 |
| E01014660 | Lockleaze North | Lockleaze | 1,559 | 1,575 | 1,563 | 1,579 | 1,601 | 1,590 | 1,600 | 1,594 | 35 | 2.2 |
| E01014661 | Filton Avenue South | Lockleaze | 1,641 | 1,593 | 1,639 | 1,618 | 1,646 | 1,667 | 1,675 | 1,747 | 106 | 6.5 |
| E01014662 | Horfield Sports Ground | Lockleaze | 1,541 | 1,523 | 1,536 | 1,604 | 1,606 | 1,610 | 1,602 | 1,640 | 99 | 6.4 |
| E01014663 | Lockleaze South | Lockleaze | 1,447 | 1,452 | 1,460 | 1,466 | 1,461 | 1,473 | 1,488 | 1,530 | 83 | 5.7 |
| E01014664 | Muller Road | Lockleaze | 1,545 | 1,517 | 1,532 | 1,536 | 1,560 | 1,554 | 1,571 | 1,603 | 58 | 3.8 |
| E01014665 | Eastgate | Lockleaze | 1,733 | 1,740 | 1,740 | 1,714 | 1,771 | 1,778 | 1,815 | 1,843 | 110 | 6.3 |
| E01014666 | Cranbrook Road | Redland | 1,642 | 1,642 | 1,662 | 1,667 | 1,701 | 1,714 | 1,750 | 1,767 | 125 | 7.6 |
| E01014667 | Westbury Park South | Redland | 1,543 | 1,578 | 1,570 | 1,571 | 1,612 | 1,637 | 1,647 | 1,650 | 107 | 6.9 |
| E01014668 | Berkeley Road South | Redland | 1,524 | 1,553 | 1,620 | 1,623 | 1,636 | 1,660 | 1,636 | 1,660 | 136 | 8.9 |
| E01014669 | Redland Court Road | Redland | 1,501 | 1,509 | 1,514 | 1,506 | 1,478 | 1,504 | 1,577 | 1,642 | 141 | 9.4 |
| E01014670 | Zetland Road | Redland | 1,478 | 1,495 | 1,465 | 1,501 | 1,528 | 1,554 | 1,599 | 1,569 | 91 | 6.2 |
| E01014671 | St Andrews Park | Redland | 1,512 | 1,507 | 1,487 | 1,592 | 1,651 | 1,700 | 1,695 | 1,718 | 206 | 13.6 |
| E01014672 | Manor Park | Redland | 1,666 | 1,670 | 1,671 | 1,693 | 1,766 | 1,886 | 1,860 | 1,918 | 252 | 15.1 |
| E01014673 | Two Mile Hill East | St George East | 1,380 | 1,330 | 1,315 | 1,350 | 1,508 | 1,583 | 1,625 | 1,725 | 345 | 25.0 |
| E01014674 | Burchells Green | St George East | 1,475 | 1,488 | 1,476 | 1,454 | 1,455 | 1,440 | 1,473 | 1,508 | 33 | 2.2 |
| E01014675 | Two Mile Hill West | St George East | 1,491 | 1,476 | 1,517 | 1,556 | 1,573 | 1,561 | 1,568 | 1,588 | 97 | 6.5 |
| E01014676 | Kingsway | St George East | 1,401 | 1,373 | 1,371 | 1,409 | 1,446 | 1,421 | 1,478 | 1,502 | 101 | 7.2 |
| E01014677 | Crews Hole | St George East | 1,337 | 1,304 | 1,315 | 1,347 | 1,376 | 1,393 | 1,436 | 1,419 | 82 | 6.1 |
| E01014678 | Nags Head Hill | St George East | 1,475 | 1,473 | 1,460 | 1,482 | 1,467 | 1,502 | 1,529 | 1,565 | 90 | 6.1 |
| E01014679 | Bryants Hill | St George East | 1,466 | 1,473 | 1,456 | 1,435 | 1,489 | 1,499 | 1,544 | 1,523 | 57 | 3.9 |
| E01014680 | Conham Valley | St George East | 1,332 | 1,329 | 1,327 | 1,327 | 1,320 | 1,321 | 1,313 | 1,297 | -35 | -2.6 |
| E01014681 | Redfield | St George West | 1,819 | 1,839 | 1,812 | 1,817 | 1,837 | 1,867 | 1,980 | 2,037 | 218 | 12.0 |
| E01014682 | West St George | St George West | 1,490 | 1,521 | 1,514 | 1,500 | 1,533 | 1,559 | 1,603 | 1,604 | 114 | 7.7 |
| E01014683 | Clouds Hill | St George West | 1,490 | 1,557 | 1,533 | 1,556 | 1,630 | 1,671 | 1,665 | 1,684 | 194 | 13.0 |
| E01014684 | St Georges Park | St George West | 1,580 | 1,562 | 1,546 | 1,582 | 1,608 | 1,681 | 1,733 | 1,762 | 182 | 11.5 |
| E01014685 | Whiteway | St George West | 1,538 | 1,555 | 1,523 | 1,526 | 1,541 | 1,567 | 1,533 | 1,513 | -25 | -1.6 |
| E01014686 | Plummers Hill | St George West | 1,480 | 1,473 | 1,485 | 1,469 | 1,483 | 1,513 | 1,477 | 1,499 | 19 | 1.3 |
| E01014687 | East St George | St George West | 1,512 | 1,526 | 1,490 | 1,483 | 1,519 | 1,516 | 1,535 | 1,549 | 37 | 2.4 |
| E01014688 | Trymside | Southmead | 1,666 | 1,685 | 1,660 | 1,684 | 1,718 | 1,722 | 1,749 | 1,778 | 112 | 6.7 |
| E01014689 | Southmead Central | Southmead | 1,529 | 1,492 | 1,486 | 1,500 | 1,503 | 1,559 | 1,537 | 1,575 | 46 | 3.0 |
| E01014690 | Southmead East | Southmead | 1,556 | 1,549 | 1,552 | 1,551 | 1,547 | 1,570 | 1,691 | 1,815 | 259 | 16.6 |
| E01014691 | Southmead West | Southmead | 1,769 | 1,741 | 1,699 | 1,787 | 1,857 | 1,859 | 1,899 | 1,938 | 169 | 9.6 |
| E01014692 | Fonthill | Southmead | 1,529 | 1,528 | 1,561 | 1,586 | 1,611 | 1,610 | 1,581 | 1,598 | 69 | 4.5 |
| E01014693 | Charlton Mead | Southmead | 1,472 | 1,454 | 1,457 | 1,458 | 1,488 | 1,489 | 1,482 | 1,465 | -7 | -0.5 |
| E01014694 | Southmead North | Southmead | 1,579 | 1,563 | 1,572 | 1,574 | 1,602 | 1,598 | 1,604 | 1,617 | 38 | 2.4 |
| E01014695 | Bower Ashton | Southville | 1,449 | 1,446 | 1,457 | 1,466 | 1,501 | 1,459 | 1,463 | 1,511 | 62 | 4.3 |
| E01014696 | Hamilton Road | Southville | 1,496 | 1,507 | 1,508 | 1,517 | 1,514 | 1,570 | 1,625 | 1,612 | 116 | 7.8 |
| E01014697 | Bedminster | Southville | 1,467 | 1,477 | 1,512 | 1,576 | 1,655 | 1,917 | 2,118 | 2,171 | 704 | 48.0 |
| E01014698 | Stackpool Road | Southville | 1,483 | 1,475 | 1,498 | 1,545 | 1,572 | 1,592 | 1,633 | 1,669 | 186 | 12.5 |

| LSOA | LSOA local name | Ward name | 2001 | 2002 | 2003 | 2004 | 2005 | 2006 | 2007 | 2008 | change 2001 2008 | % change 2001-2008 |
|-----------|--------------------------|------------------|----------------|----------------|----------------|----------------|----------------|----------------|----------------|----------------|---------------------|-----------------------|
| E01014699 | Coronation Road West | Southville | 1,409 | 1,454 | 1,466 | 1,517 | 1,507 | 1,544 | 1,548 | 1,594 | 185 | 13.1 |
| E01014700 | Ashton | Southville | 1,516 | 1,550 | 1,555 | 1,539 | 1,542 | 1,561 | 1,592 | 1,635 | 119 | 7.8 |
| E01014701 | Coronation Road East | Southville | 1,473 | 1,492 | 1,515 | 1,545 | 1,546 | 1,573 | 1,615 | 1,720 | 247 | 16.8 |
| E01014702 | Stockwood Lane North | Stockwood | 1,615 | 1,592 | 1,548 | 1,518 | 1,540 | 1,533 | 1,511 | 1,499 | -116 | -7.2 |
| E01014703 | Burnbush Hill | Stockwood | 1,524 | 1,548 | 1,560 | 1,557 | 1,571 | 1,555 | 1,536 | 1,533 | 9 | 0.6 |
| E01014704 | Woodleigh Gardens | Stockwood | 1,518 | 1,501 | 1,500 | 1,520 | 1,505 | 1,518 | 1,554 | 1,575 | 57 | 3.8 |
| E01014705 | The Coots | Stockwood | 1,550 | 1,538 | 1,522 | 1,504 | 1,496 | 1,512 | 1,485 | 1,489 | -61 | -3.9 |
| E01014706 | Burnbush | Stockwood | 1,392 | 1,391 | 1,345 | 1,365 | 1,358 | 1,372 | 1,363 | 1,380 | -12 | -0.9 |
| E01014707 | Stockwood Lane South | Stockwood | 1,706 | 1,683 | 1,702 | 1,688 | 1,653 | 1,667 | 1,647 | 1,651 | -55 | -3.2 |
| E01014708 | Hazelbury | Stockwood | 1,632 | 1,628 | 1,686 | 1,748 | 1,758 | 1,766 | 1,819 | 1,846 | 214 | 13.1 |
| E01014709 | Sneyd Park and the Downs | Stoke Bishop | 1,229 | 1,223 | 1,211 | 1,207 | 1,203 | 1,202 | 1,232 | 1,247 | 18 | 1.5 |
| E01014710 | Rockleaze | Stoke Bishop | 1,361 | 1,350 | 1,387 | 1,376 | 1,412 | 1,439 | 1,477 | 1,537 | 176 | 12.9 |
| E01014711 | Stoke Bishop North | Stoke Bishop | 1,246 | 1,246 | 1,249 | 1,249 | 1,263 | 1,261 | 1,251 | 1,252 | 6 | 0.5 |
| E01014712 | Stoke Bishop South | Stoke Bishop | 1,269 | 1,295 | 1,312 | 1,292 | 1,290 | 1,299 | 1,285 | 1,328 | 59 | 4.6 |
| E01014713 | Old Sneed Park | Stoke Bishop | 1,376 | 1,376 | 1,343 | 1,366 | 1,371 | 1,343 | 1,341 | 1,316 | -60 | -4.4 |
| E01014714 | University Halls | Stoke Bishop | 3,228 | 3,290 | 3,263 | 3,300 | 3,312 | 3,322 | 3,368 | 3,372 | 144 | 4.5 |
| E01014715 | Canford Park | Westbury-on-Trym | 1,493 | 1,527 | 1,518 | 1,578 | 1,574 | 1,568 | 1,551 | 1,553 | 60 | 4.0 |
| E01014716 | Canford Lane | Westbury-on-Trym | 1,500 | 1,454 | 1,487 | 1,512 | 1,502 | 1,490 | 1,518 | 1,499 | -1 | -0.1 |
| E01014717 | Elmlea | Westbury-on-Trym | 1,597 | 1,601 | 1,590 | 1,588 | 1,703 | 1,673 | 1,704 | 1,680 | 83 | 5.2 |
| E01014718 | Henbury Hill | Westbury-on-Trym | 1,370 | 1,360 | 1,336 | 1,355 | 1,369 | 1,373 | 1,399 | 1,407 | 37 | 2.7 |
| E01014719 | Westbury Village | Westbury-on-Trym | 1,358 | 1,354 | 1,364 | 1,337 | 1,296 | 1,302 | 1,318 | 1,296 | -62 | -4.6 |
| E01014720 | Lake Road | Westbury-on-Trym | 1,531 | 1,531 | 1,515 | 1,498 | 1,531 | 1,548 | 1,554 | 1,553 | 22 | 1.4 |
| E01014721 | Westbury North | Westbury-on-Trym | 1,492 | 1,497 | 1,517 | 1,551 | 1,528 | 1,558 | 1,550 | 1,521 | 29 | 1.9 |
| E01014722 | Tanorth Road | Whitchurch Park | 1,699 | 1,718 | 1,704 | 1,641 | 1,641 | 1,641 | 1,626 | 1,619 | -80 | -4.7 |
| E01014723 | Court Farm Road | Whitchurch Park | 1,405 | 1,372 | 1,383 | 1,367 | 1,351 | 1,353 | 1,355 | 1,359 | -46 | -3.3 |
| E01014724 | Fulford Road South | Whitchurch Park | 1,566 | 1,579 | 1,552 | 1,558 | 1,590 | 1,591 | 1,629 | 1,679 | 113 | 7.2 |
| E01014725 | Whitchurch | Whitchurch Park | 1,600 | 1,569 | 1,557 | 1,544 | 1,545 | 1,525 | 1,516 | 1,503 | -97 | -6.1 |
| E01014726 | Hareclive | Whitchurch Park | 1,517 | 1,459 | 1,584 | 1,600 | 1,625 | 1,652 | 1,659 | 1,675 | 158 | 10.4 |
| E01014727 | Bishport Avenue East | Whitchurch Park | 1,605 | 1,612 | 1,577 | 1,600 | 1,595 | 1,602 | 1,611 | 1,599 | -6 | -0.4 |
| E01014728 | Whitchurch Park | Whitchurch Park | 1,663 | 1,664 | 1,678 | 1,690 | 1,714 | 1,733 | 1,735 | 1,750 | 87 | 5.2 |
| E01014729 | Marksbury Road | Windmill Hill | 1,522 | 1,524 | 1,491 | 1,493 | 1,541 | 1,545 | 1,617 | 1,633 | 111 | 7.3 |
| E01014730 | Lower Totterdown | Windmill Hill | 1,524 | 1,537 | 1,535 | 1,527 | 1,529 | 1,577 | 1,578 | 1,630 | 106 | 7.0 |
| E01014731 | Upper Totterdown | Windmill Hill | 1,475 | 1,495 | 1,485 | 1,462 | 1,514 | 1,523 | 1,535 | 1,521 | 46 | 3.1 |
| E01014732 | Wells Road | Windmill Hill | 1,541 | 1,488 | 1,471 | 1,518 | 1,533 | 1,574 | 1,599 | 1,578 | 37 | 2.4 |
| E01014733 | Windmill Hill West | Windmill Hill | 1,570 | 1,539 | 1,548 | 1,516 | 1,528 | 1,578 | 1,615 | 1,680 | 110 | 7.0 |
| E01014734 | Windmill Hill East | Windmill Hill | 1,489 | 1,481 | 1,450 | 1,444 | 1,477 | 1,441 | 1,463 | 1,468 | -21 | -1.4 |
| E01014735 | Victoria Park | Windmill Hill | 1,514 | 1,508 | 1,477 | 1,479 | 1,504 | 1,507 | 1,505 | 1,541 | 27 | 1.8 |
| E01014736 | St Johns Lane | Windmill Hill | 1,686 | 1,695 | 1,696 | 1,708 | 1,754 | 1,838 | 1,856 | 1,848 | 162 | 9.6 |
| | | Bristol | 390,049 | 391,039 | 393,523 | 397,457 | 405,641 | 410,487 | 416,352 | 421,316 | 31,267 | 8.0 |

Mid-2008 Population Estimates for Lower Layer Super Output Areas in England and Wales by Broad Age Group and Sex

Lower Layer Super Output Areas

Super Output Areas (SOAs) form a geographic hierarchy designed to improve the reporting of small area statistics in England and Wales. Lower Layer Super Output Areas (LSOAs) were built from groups of 2001 Census Output Areas (OAs), typically 4 to 6, and designed to have a minimum population of 1,000 and a mean population of 1,500. These LSOAs nest within Middle Layer Super Output Areas (MSOAs), there are typically 4 to 5 LSOAs within a MSOA.

There are 34,378 LSOAs in England and Wales (32,482 in England, 1,896 in Wales) and they were generated by a computer programme which merged OAs taking into account measures of population size, mutual proximity and social homogeneity. The boundaries were released to the public in February 2004.

Notes

1. These figures are consistent with the published mid-2008 local authority population estimates, with the exception of Neath Port Talbot and Powys where the local authority mid-year estimates reflect the April 2005 boundary changes affecting these local authorities. The LSOA boundaries within Neath Port Talbot and Powys are unchanged.
2. Whilst the estimates are produced down to unit level, it is not implied that the estimates are accurate to this level of detail. In addition there are limitations with the administrative data sources used to produce these estimates which may impact on the quality of the estimates.
3. These estimates are experimental statistics and do not yet meet the quality standards of National Statistics. Feedback over the quality of these estimates is welcome (see contact details below).

Terms and Conditions

1. These figures are not to be disseminated or published without the prior consent of the Office for National Statistics. Any reproduction of these Data must acknowledge the Office for National Statistics as the Data source.
2. You may not rent or lease the data or publish it for commercial gain. The Data are the property of the Office for National Statistics and this Licence only grants your organisation use of the data (including non-commercial reproduction). This agreement may be terminated at any time at which point the Data must be returned to the Office for National Statistics.
3. The copyright in the Data, in any format, belongs to the Crown and is protected by English Copyright Law. Any reproduction of these Data must carry recognition of Crown Copyright. It should be noted that the Data are value added and therefore fall outside the scope of OPSI's Click-Use Licence terms.
4. The Office for National Statistics expressly excludes all warranties, expressed or implied including without limitation implied warranties of merchantability and fitness for a particular purpose with respect to defects in the Data and/or software. In no event shall the Office for National Statistics be liable for any loss of profit and/or any other commercial damage including without limitation special, incidental, consequential or other damages.

Data supplier:

Subnational Statistics Unit
ONS Centre for Demography
Office for National Statistics
Segensworth Road
FAREHAM
PO15 5RR

email: sape@ons.gov.uk tel: 01329 444664

Source: Office for National Statistics © Crown Copyright 2009

Date published: 1 October 2009

Information about the ONS small area population estimates project can be found on the National Statistics website: www.statistics.gov.uk/sape