

## Population Estimates by Ward in Bristol 2001-2008

Source: ONS Experimental Statistics © Crown Copyright

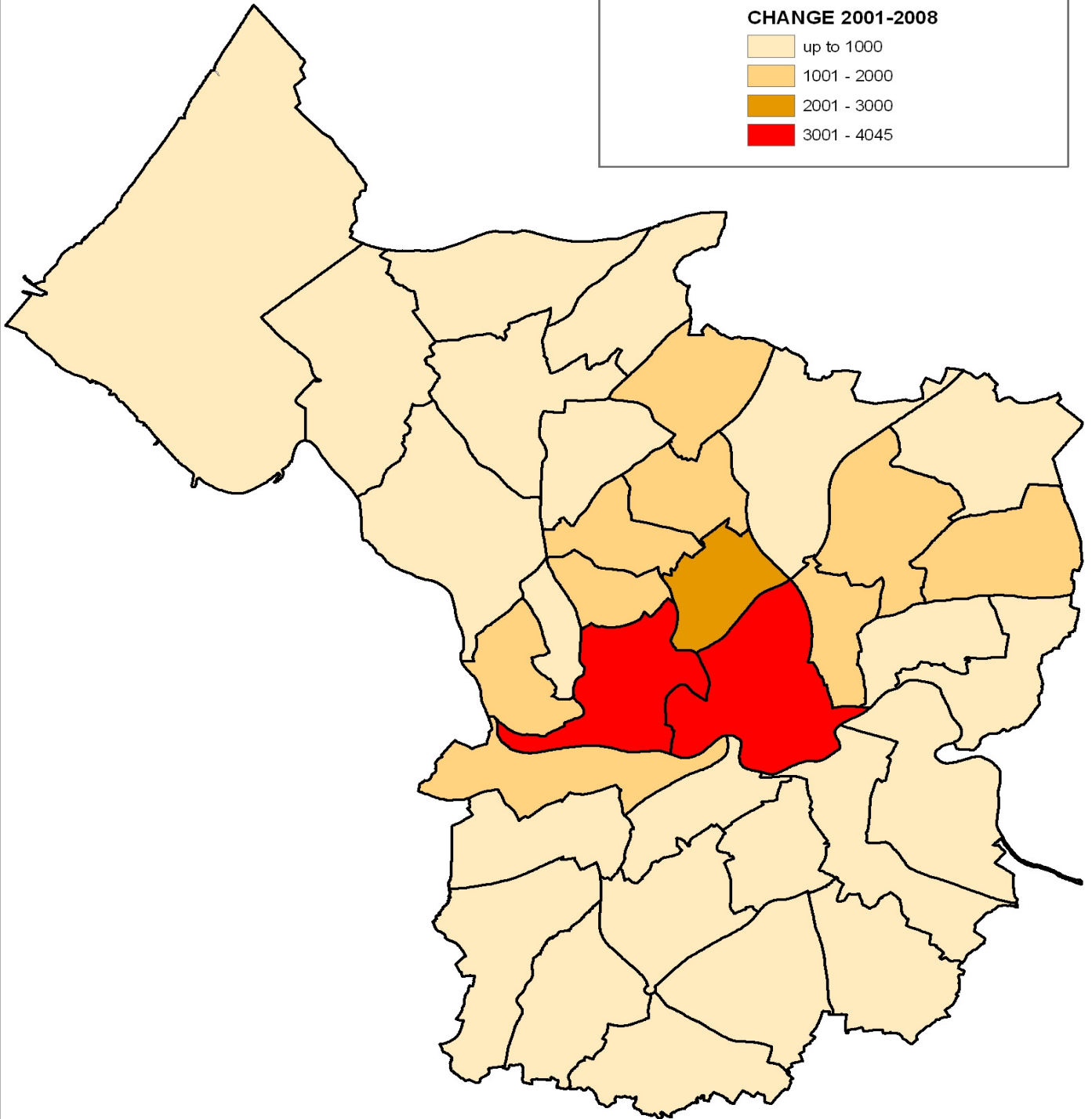
Supplied by Research and Consultation, Deputy Chief Executives Department, Bristol City Council

Ward code	Ward name	2001	2002	2003	2004	2005	2006	2007	2008	change 2001-2008	
										number	%
00HBNM	Ashley	13,422	13,670	13,906	14,372	14,987	15,281	15,404	15,503	2,081	15.5
00HBNN	Avonmouth	12,150	12,047	12,162	12,162	12,276	12,248	12,499	12,672	522	4.3
00HBNP	Bedminster	10,752	10,653	10,635	10,739	10,877	11,005	11,380	11,580	828	7.7
00HBNQ	Bishopston	12,204	12,141	12,413	12,395	12,839	13,081	13,375	13,554	1,350	11.1
00HBNR	Bishopsworth	11,352	11,362	11,518	11,465	11,502	11,550	11,593	11,700	348	3.1
00HBNS	Brislington East	11,511	11,353	11,388	11,391	11,441	11,525	11,516	11,611	100	0.9
00HBNT	Brislington West	10,623	10,624	10,695	10,818	11,015	11,111	11,250	11,391	768	7.2
00HBNV	Cabot	9,849	10,402	11,107	11,825	12,494	13,024	13,325	13,211	3,362	34.1
00HBNW	Clifton	10,536	10,649	10,912	11,153	11,477	11,285	11,396	11,693	1,157	11.0
00HBNX	Clifton East	9,612	9,725	9,850	10,050	10,454	10,344	10,230	10,440	828	8.6
00HBNY	Cotham	10,938	10,868	10,933	11,237	11,784	11,755	12,359	12,351	1,413	12.9
00HBNZ	Easton	12,213	12,165	12,077	12,220	12,629	13,001	13,107	13,452	1,239	10.1
00HBPA	Eastville	10,989	11,122	11,184	11,294	11,702	12,059	12,276	12,430	1,441	13.1
00HBPB	Filwood	11,637	11,590	11,624	11,633	11,731	11,787	11,901	12,006	369	3.2
00HBPC	Frome Vale	10,773	10,858	10,822	10,780	11,091	11,459	11,551	11,500	727	6.7
00HBPD	Hartcliffe	11,232	11,285	11,270	11,179	11,303	11,367	11,523	11,555	323	2.9
00HBPE	Henbury	9,507	9,478	9,574	9,685	9,885	9,882	10,050	10,182	675	7.1
00HBPF	Hengrove	11,334	11,341	11,460	11,499	11,490	11,483	11,578	11,632	298	2.6
00HBPG	Henleaze	10,521	10,448	10,409	10,510	10,560	10,495	10,601	10,536	15	0.1
00HBPH	Hillfields	12,354	12,464	12,416	12,506	12,774	12,931	13,121	13,376	1,022	8.3
00HBPJ	Horfield	11,394	11,448	11,462	11,513	12,015	12,494	12,855	12,926	1,532	13.4
00HBPK	Kingsweston	10,905	11,003	10,916	10,853	10,862	10,886	10,933	11,042	137	1.3
00HBPL	Knowle	10,989	10,962	11,027	11,028	11,190	11,205	11,308	11,326	337	3.1
00HBPM	Lawrence Hill	13,179	13,459	13,871	14,562	15,344	16,174	16,556	17,225	4,046	30.7
00HBPN	Lockleaze	11,178	11,051	11,122	11,041	10,923	10,702	10,910	11,408	230	2.1
00HBPP	Redland	10,866	10,954	10,989	11,153	11,372	11,655	11,764	11,924	1,058	9.7
00HBPQ	St George East	11,358	11,246	11,237	11,360	11,634	11,720	11,966	12,127	769	6.8
00HBPR	St George West	10,911	11,033	10,903	10,933	11,151	11,374	11,526	11,648	737	6.8
00HBPS	Southmead	11,100	11,012	10,987	11,140	11,326	11,407	11,543	11,786	686	6.2
00HBPT	Southville	10,293	10,401	10,511	10,705	10,837	11,216	11,594	11,912	1,619	15.7
00HBPU	Stockwood	10,938	10,881	10,863	10,900	10,881	10,923	10,915	10,973	35	0.3
00HBPV	Stoke Bishop	9,711	9,780	9,765	9,790	9,851	9,866	9,954	10,052	341	3.5
00HBPX	Westbury-on-Trym	10,341	10,324	10,327	10,419	10,503	10,512	10,594	10,509	168	1.6
00HBPY	Whitchurch Park	11,055	10,973	11,035	11,000	11,061	11,097	11,131	11,184	129	1.2
00HBPZ	Windmill Hill	12,321	12,267	12,153	12,147	12,380	12,583	12,768	12,899	578	4.7
<b>00HB</b>	<b>Bristol</b>	<b>390,048</b>	<b>391,039</b>	<b>393,523</b>	<b>397,457</b>	<b>405,641</b>	<b>410,487</b>	<b>416,352</b>	<b>421,316</b>	<b>31,268</b>	<b>8.0</b>

## Population Change by Ward 2001 to 2008

Source: ONS Experimental Statistics © Crown Copyright  
Supplied by Research and Consultation, Bristol City Council

### CHANGE 2001-2008



## Mid-2008 Population Estimates for Lower Layer Super Output Areas in England and Wales by Broad Age Group and Sex

### Lower Layer Super Output Areas

Super Output Areas (SOAs) form a geographic hierarchy designed to improve the reporting of small area statistics in England and Wales. Lower Layer Super Output Areas (LSOAs) were built from groups of 2001 Census Output Areas (OAs), typically 4 to 6, and designed to have a minimum population of 1,000 and a mean population of 1,500. These LSOAs nest within Middle Layer Super Output Areas (MSOAs), there are typically 4 to 5 LSOAs within a MSOA.

There are 34,378 LSOAs in England and Wales (32,482 in England, 1,896 in Wales) and they were generated by a computer programme which merged OAs taking into account measures of population size, mutual proximity and social homogeneity. The boundaries were released to the public in February 2004.

### Notes

1. These figures are consistent with the published mid-2008 local authority population estimates, with the exception of Neath Port Talbot and Powys where the local authority mid-year estimates reflect the April 2005 boundary changes affecting these local authorities. The LSOA boundaries within Neath Port Talbot and Powys are unchanged.
2. Whilst the estimates are produced down to unit level, it is not implied that the estimates are accurate to this level of detail. In addition there are limitations with the administrative data sources used to produce these estimates which may impact on the quality of the estimates.
3. These estimates are experimental statistics and do not yet meet the quality standards of National Statistics. Feedback over the quality of these estimates is welcome (see contact details below).

### Terms and Conditions

1. These figures are not to be disseminated or published without the prior consent of the Office for National Statistics. Any reproduction of these Data must acknowledge the Office for National Statistics as the Data source.
2. You may not rent or lease the data or publish it for commercial gain. The Data are the property of the Office for National Statistics and this Licence only grants your organisation use of the data (including non-commercial reproduction). This agreement may be terminated at any time at which point the Data must be returned to the Office for National Statistics.
3. The copyright in the Data, in any format, belongs to the Crown and is protected by English Copyright Law. Any reproduction of these Data must carry recognition of Crown Copyright. It should be noted that the Data are value added and therefore fall outside the scope of OPSI's Click-Use Licence terms.
4. The Office for National Statistics expressly excludes all warranties, expressed or implied including without limitation implied warranties of merchantability and fitness for a particular purpose with respect to defects in the Data and/or software. In no event shall the Office for National Statistics be liable for any loss of profit and/or any other commercial damage including without limitation special, incidental, consequential or other damages.

### Data supplier:

Subnational Statistics Unit  
ONS Centre for Demography  
Office for National Statistics  
Segensworth Road  
FAREHAM  
PO15 5RR

email: [sape@ons.gov.uk](mailto:sape@ons.gov.uk) tel: 01329 444664

Source: Office for National Statistics © Crown Copyright 2009

Date published: 1 October 2009

Information about the ONS small area population estimates project can be found on the National Statistics website: [www.statistics.gov.uk/sape](http://www.statistics.gov.uk/sape)